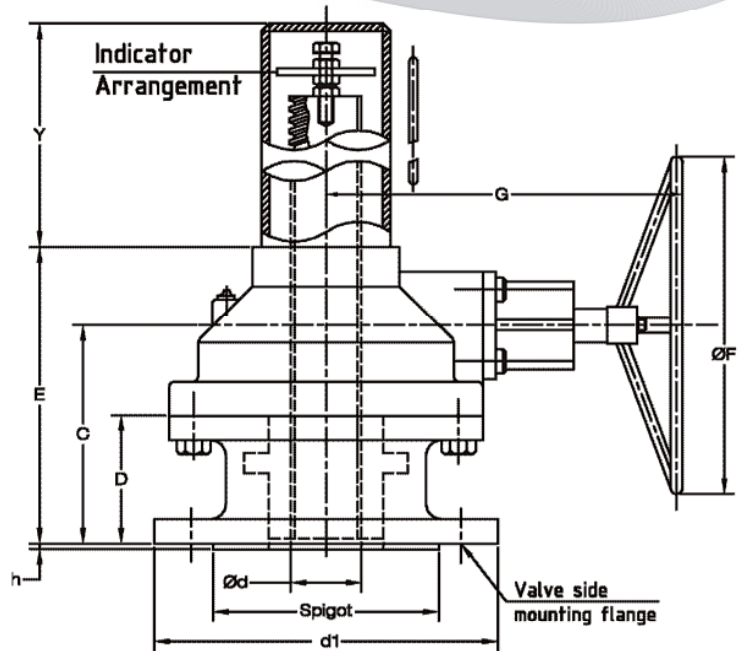


BEVEL GEAR BOX (Isolation Type) THRUST (A) BASE (for rising spindle valves)

Series : B Isolation

MATERIAL OF CONSTRUCTION

| PART NO. | PART NAME | MATERIALS |
|----------|----------------------|--------------------|
| 1 | Body | CI Is210 Gr FG 220 |
| 2 | Cover | S.G. IRON 500/7 |
| 3 | Bevel Gear | EN 19 |
| 4 | Bevel Pinion | EN 19 |
| 5 | Drive Sleeve | S.G. IRON 600/3 |
| 6 | Stem Nut | 600/3* /AB2/D2 |
| 7 | Spur Housing | CI Is210 Gr FG 220 |
| 8 | Body Fasteners | IS:1367 Gr. 10.9 |
| 9 | Side Cover Fasteners | IS:1367 Gr. 10.9 |
| 10 | Stem Cap (Optional) | ASTM A 53 |
| 11 | Hand Wheel | Steel |
| 12 | O'Ring Body | NITRILE |
| 13 | O'Ring Drive Sleeve | NITRILE |
| 14 | O'Ring Bearing Seat | NITRILE |
| 15 | Pinion Bearing Front | STD |
| 16 | Pinion Bearing Rear | STD |
| 17 | Bearing Seat | STD |



DIMENSIONAL DATA

| MODEL | d1 | C | E | ØH | G | Valve Mounting Flange |
|-------|-------|-----|-----|------|-----|-----------------------|
| B22 | SQ160 | 153 | 220 | 600 | 316 | F20 |
| B44 | Ø415 | 241 | 320 | 700 | 386 | F30/F35 |
| B66 | Ø475 | 384 | 454 | 750 | 413 | F35/F40 |
| B88 | Ø475 | 391 | 520 | 1000 | 503 | F40 |

* Standard Provided

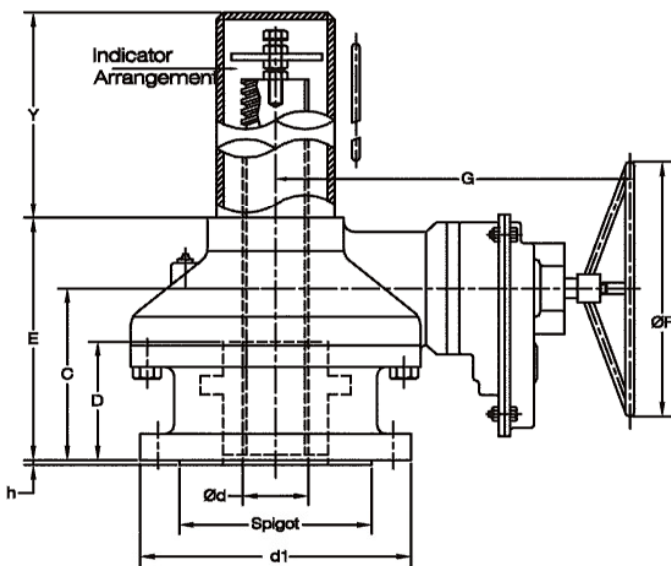
PERFORMANCE DATA

| MODEL | Gear Ratio | Output Torque NM | Thrust Kn | Mech Adv. | Ød (max) | D (max) |
|----------|------------|------------------|-----------|-----------|----------|---------|
| B22 | 4.5 | 1300 | 300 | 4.0 | 64 | 70 |
| B44 | 5.3 | 2000 | 500 | 4.8 | 75 | 156 |
| B66 | 6.4 | 4500 | 1000 | 5.7 | 100 | 160 |
| B88 | 6.5 | 12000 | 1500 | 5.7 | 125 | 170 |
| B44GT75 | 23.9\$ | 2500 | 500 | 18.2 | 75 | 156 |
| B66GT105 | 54\$ | 6500 | 1000 | 40.4 | 100 | 160 |
| B88GT150 | 66.9\$ | 12000 | 1500 | 49.6 | 125 | 170 |

DIMENSIONAL DATA

| MODEL | d1 | C | E | ØF | G | Valve Mounting Flange |
|----------|------|-----|-----|------|-----|-----------------------|
| B44GT75 | Ø415 | 241 | 320 | 700 | 553 | F35 |
| B66GT105 | Ø475 | 384 | 454 | 750 | 558 | F35 / F40 |
| B88GT150 | Ø475 | 391 | 520 | 1000 | 677 | F40 |

\$ Other ratios are available on request.



Note :

- * D = Max threading Length
- * Y = Valve Size ; To be Specified for stem protection Tube
- * Indicator Arrangement Optional
- * Hand wheel side flange can be provided for mounting electric actuator.
- * Auxiliary arrangements like Pad-lock, Hook-lock, Chainwheel, Electric flange, Protection Tube are available on request.
- * Other materials not mentioned above are available on request.



SUPRIYA PROTOTECH
Range of Valves and Accessories



C-43, 44, 45, Industrial Estate, Gokul Road, HUBLI - 580 030, Karnataka, India.

Phone : (0836) 2212417, Fax : 0836-2333641. E-mail : sales@supriyaprototech.com Website : www.supriyaprototech.com